

BLUE WATERS

SUSTAINED PETASCALE COMPUTING

9/16/19

Blue Waters User Monthly Teleconference



GREAT LAKES CONSORTIUM
FOR PETASCALE COMPUTATION

CRAY®

Agenda

- Upcoming Changes
- Recent Events and Changes to Blue Waters
- Usage, Utilization and other Items
- Upcoming Opportunities
- Request for publications!

Upcoming Changes

- 9/18/2019 – Increase in concurrent Globus transfers to/from ncsa#Nearline from 3 to 5.
- 10/1/2019 - Nearline endpoint to be “read-only”.
 - Consult your data management plan.
 - We can entertain some changes in quotas.
 - NCSA Globus Online license supports AWS and Google Drive (Academic) connectors.
- Default PE change postponed till end of Blue Waters NSF operations (12/19/2019).

Scheduled Outages

- 9/12/2019 – 7 hour unavailability for systems software testing of schedulers. Expect to see another testing period.
- 9/17/2019 – Updating of database backend might impact “usage” command and “managing users” on the portal, from Noon to 2 PM Central.
- 9/28/2019 – Building electrical work to impact portal from 7AM to Noon Central time.

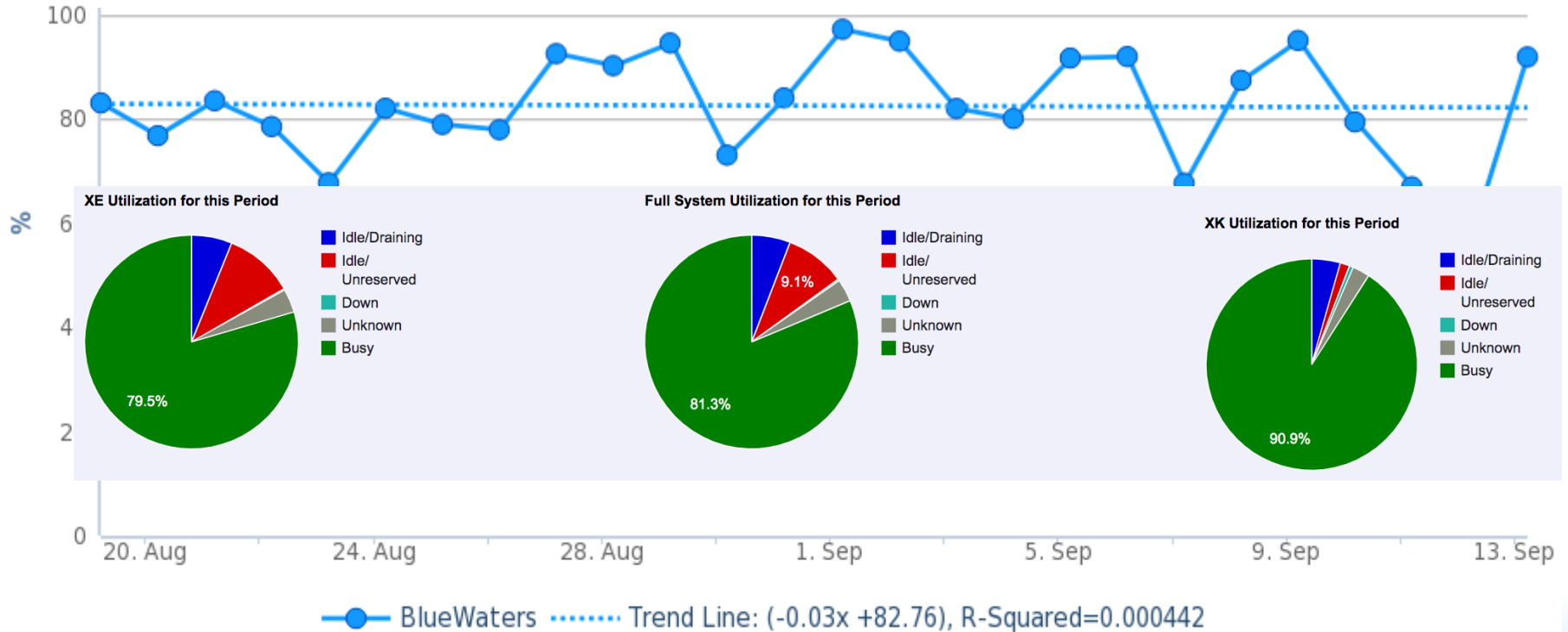
Recent Changes

- 9/1 /2019 – New ‘noalloc’, or no-allocation queue for eligible users/projects.
 - Project must still be on Blue Waters.
 - Project must be out of allocation.
 - Jobs in queue have very low priority and are preemptible after 1 hour.

Usage, Utilization and other Items

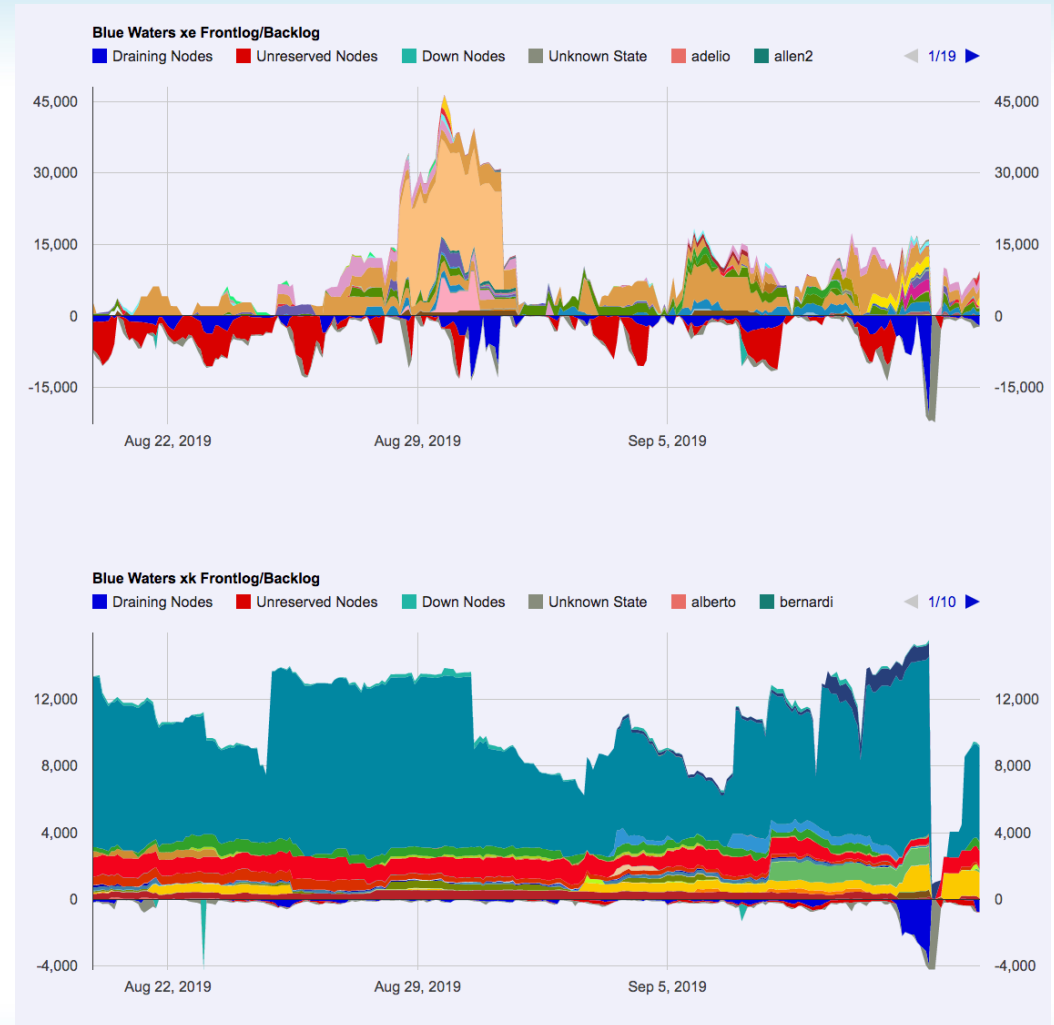
- Overall Utilization since last user call

BlueWaters Utilization (%)

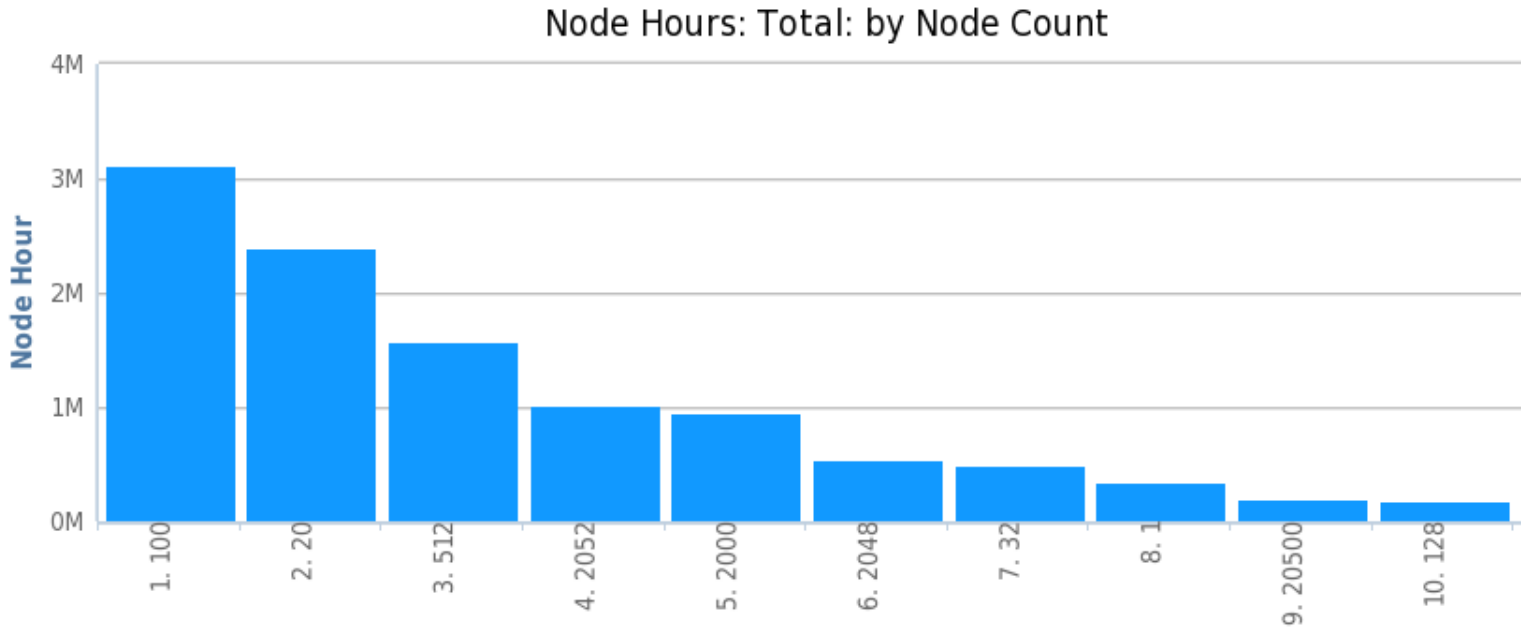


Backlog

- Since last user call.
- Vertical axis in units of **nodes**.
Colors are different users.
- Red **below** the x-axis indicates unreserved nodes.
Blue **below** the x-axis indicates draining.



Workload Details



- Data combines XE and XK jobs.
- Look for return of large XE jobs.

XSEDE Training Events

- <https://portal.xsede.org/course-calendar>

Blue Waters Hackathon


- Cancelled.



Blue Waters Weekly Webinar Series

- For more information about the webinar series, including registration, abstracts, speakers, as well as links to Youtube recordings, please visit the [Blue Waters webinar series webpage](#).
- Make sure to [RSVP on Facebook](#) and on the [Blue Waters Portal](#)
- We welcome suggestions for topics that will benefit the petascale community. Send your suggestions to bw-eot@ncsa.illinois.edu.

Request for Science Successes

- We need to be current on products that result from time on Blue Waters such as:
 - Publications, Preprints (e.g. [arXiv.org](https://arxiv.org) ) , Presentations.
 - Very interested in data product sharing.
- Appreciate updates sooner than annual reports.
 - Send to gbauer@illinois.edu
- NSF PRAC teams send information to PoCs.
- See the [Share Results](#) section of the portal as well.
- **Be sure to include [proper acknowledgment](#)**
 - Blue Waters - National Science Foundation (ACI 1238993)
 - NSF PRAC – OCI award number